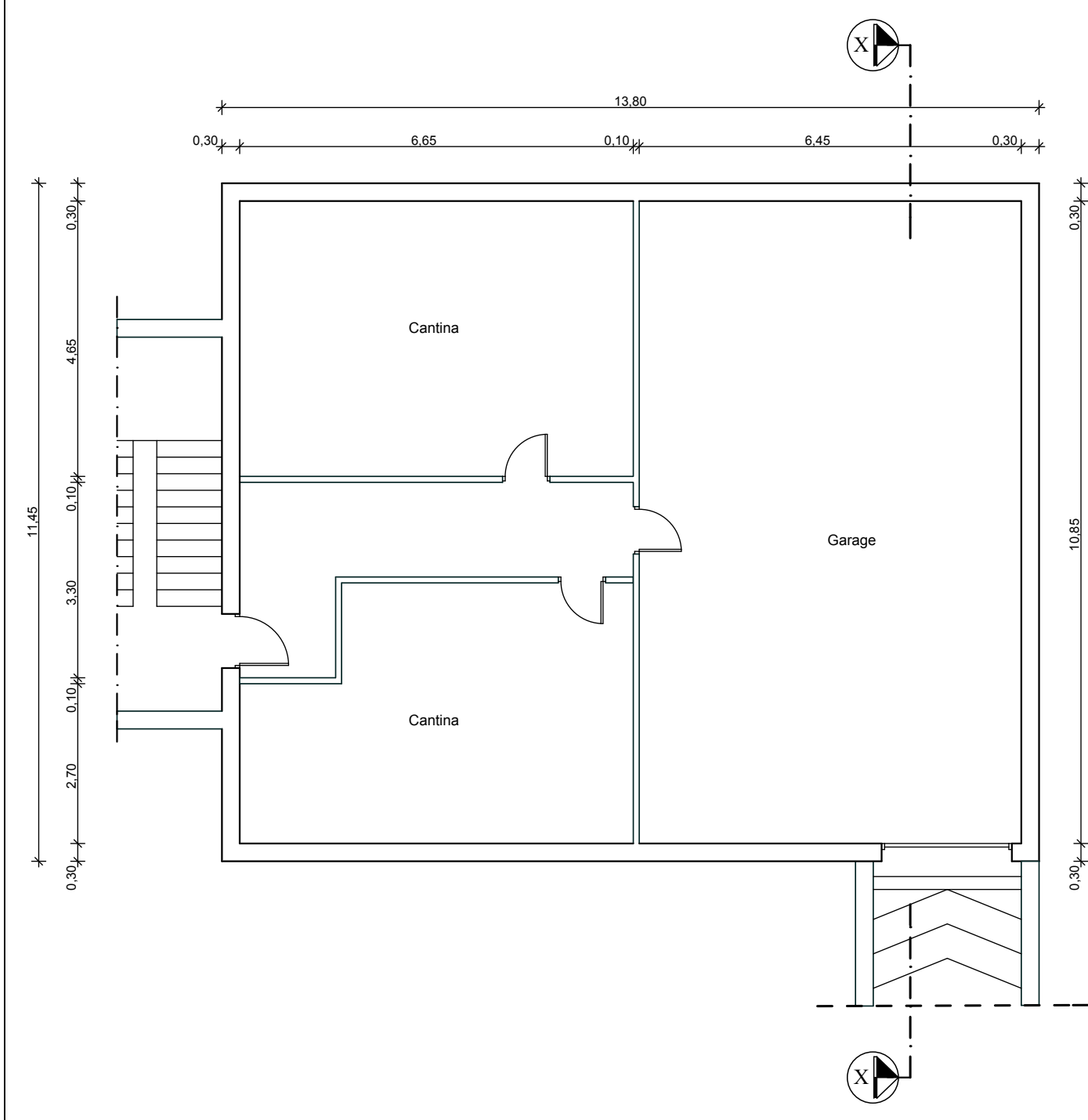
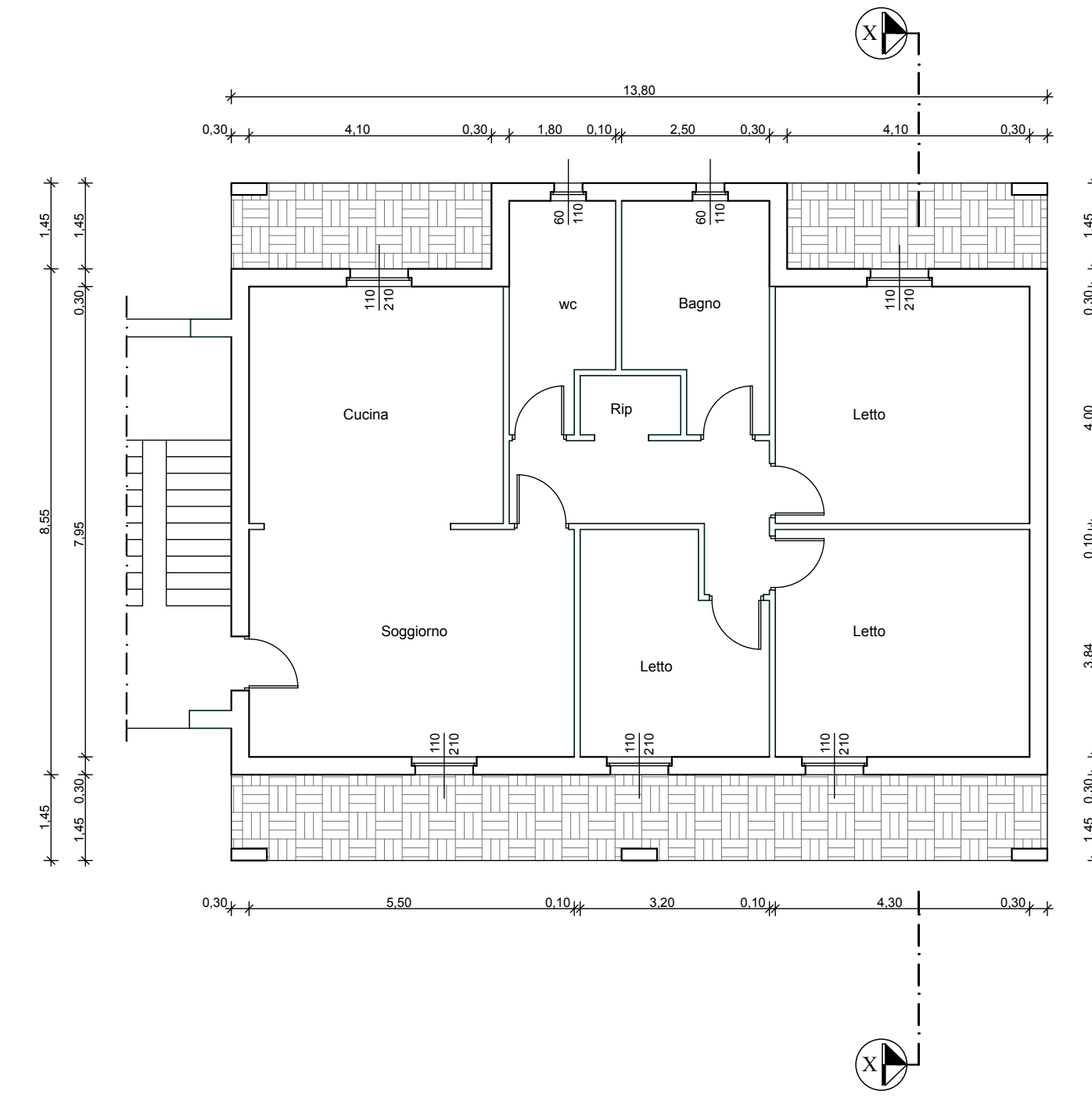


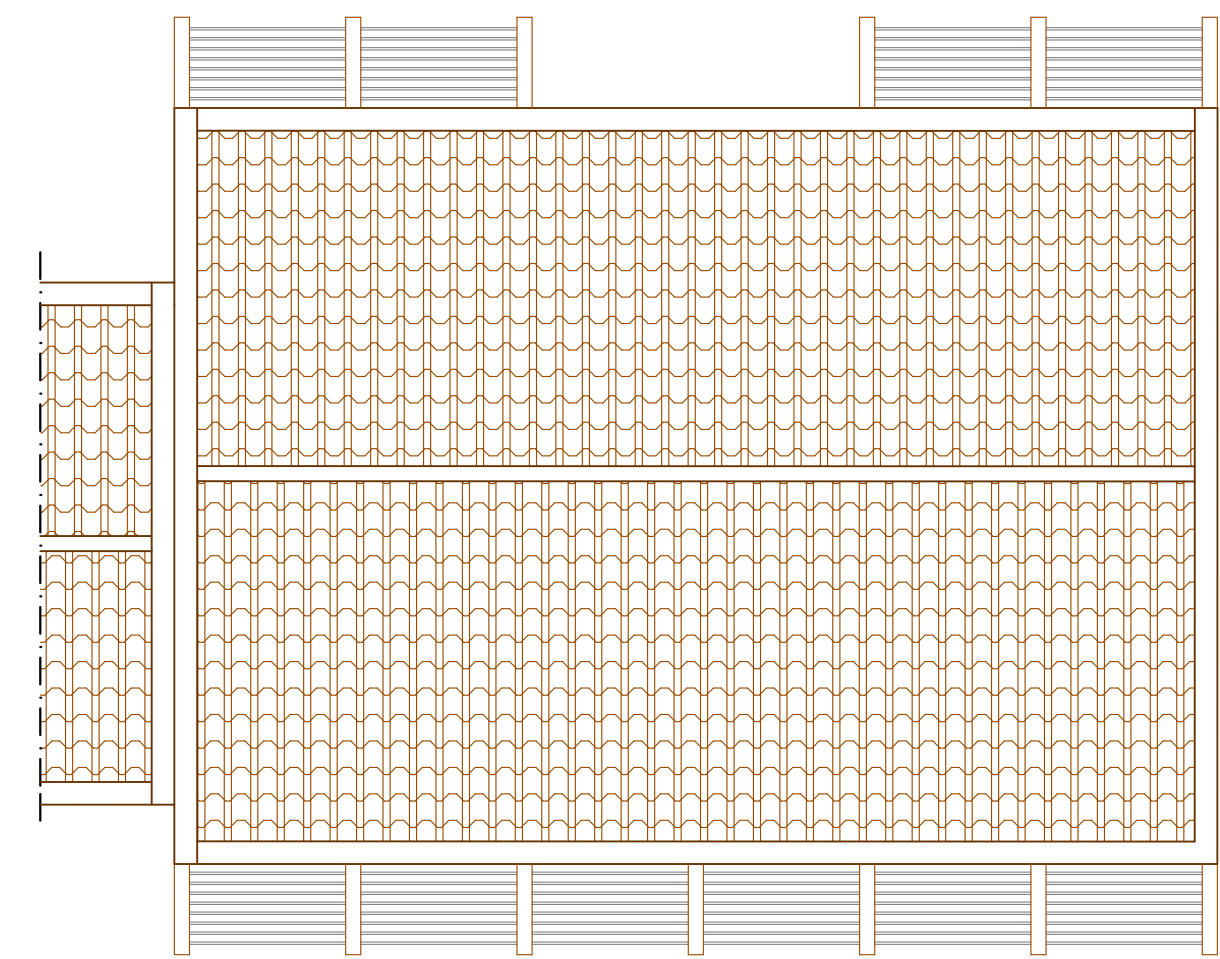
TIPOLOGIA EDILIZIA "D"



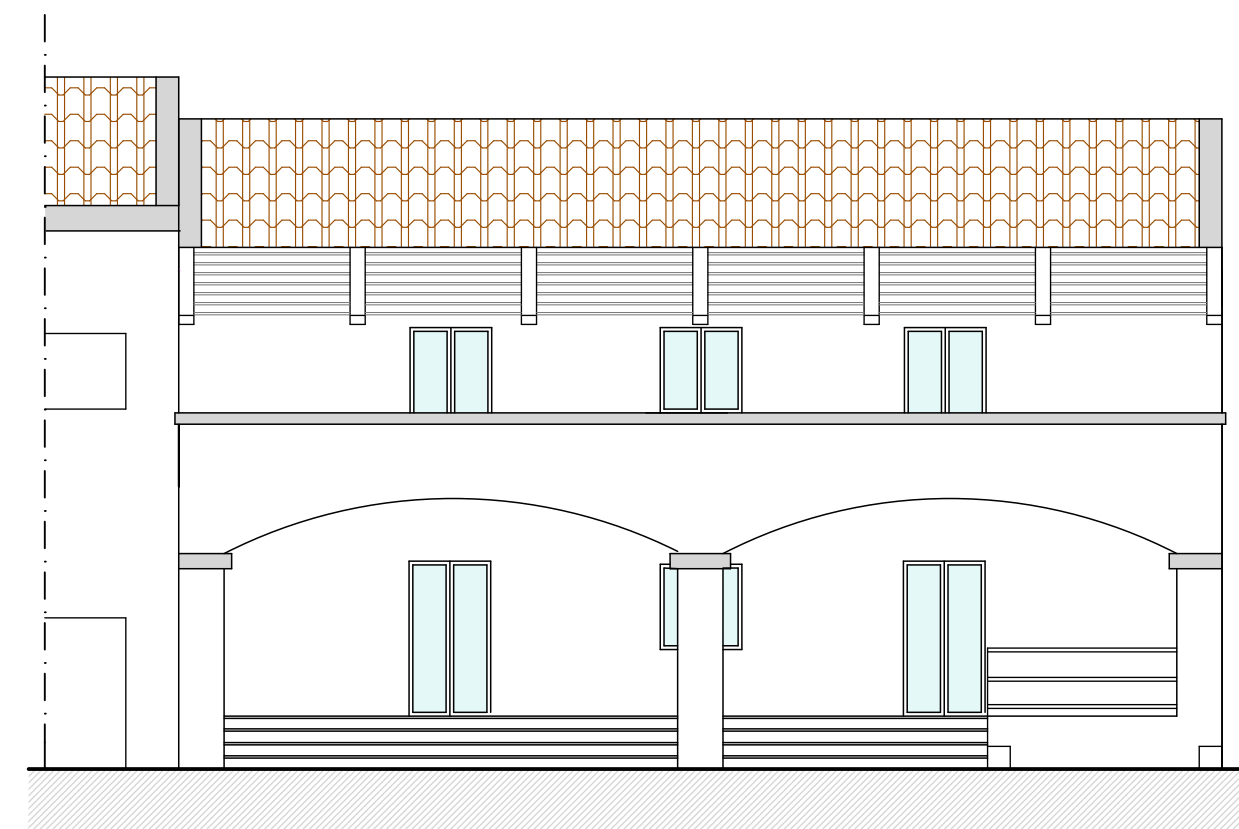
PIANTA PIANO INTERRATO Scala 1:100



PIANTA PIANO TERRA E PIANO PRIMO Scala 1:100



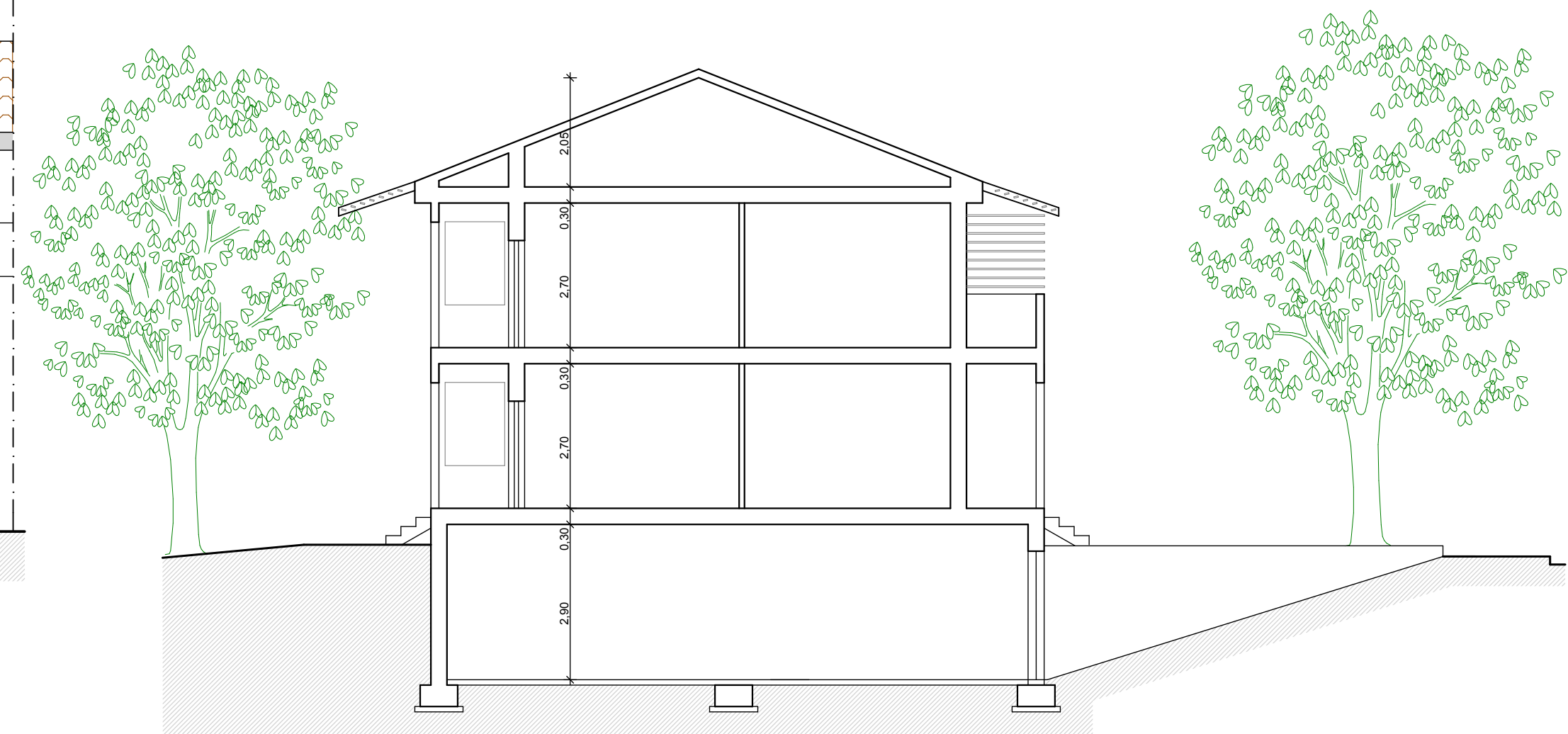
PIANTA COPERTURA Scala 1:100



PROSPETTO PRINCIPALE

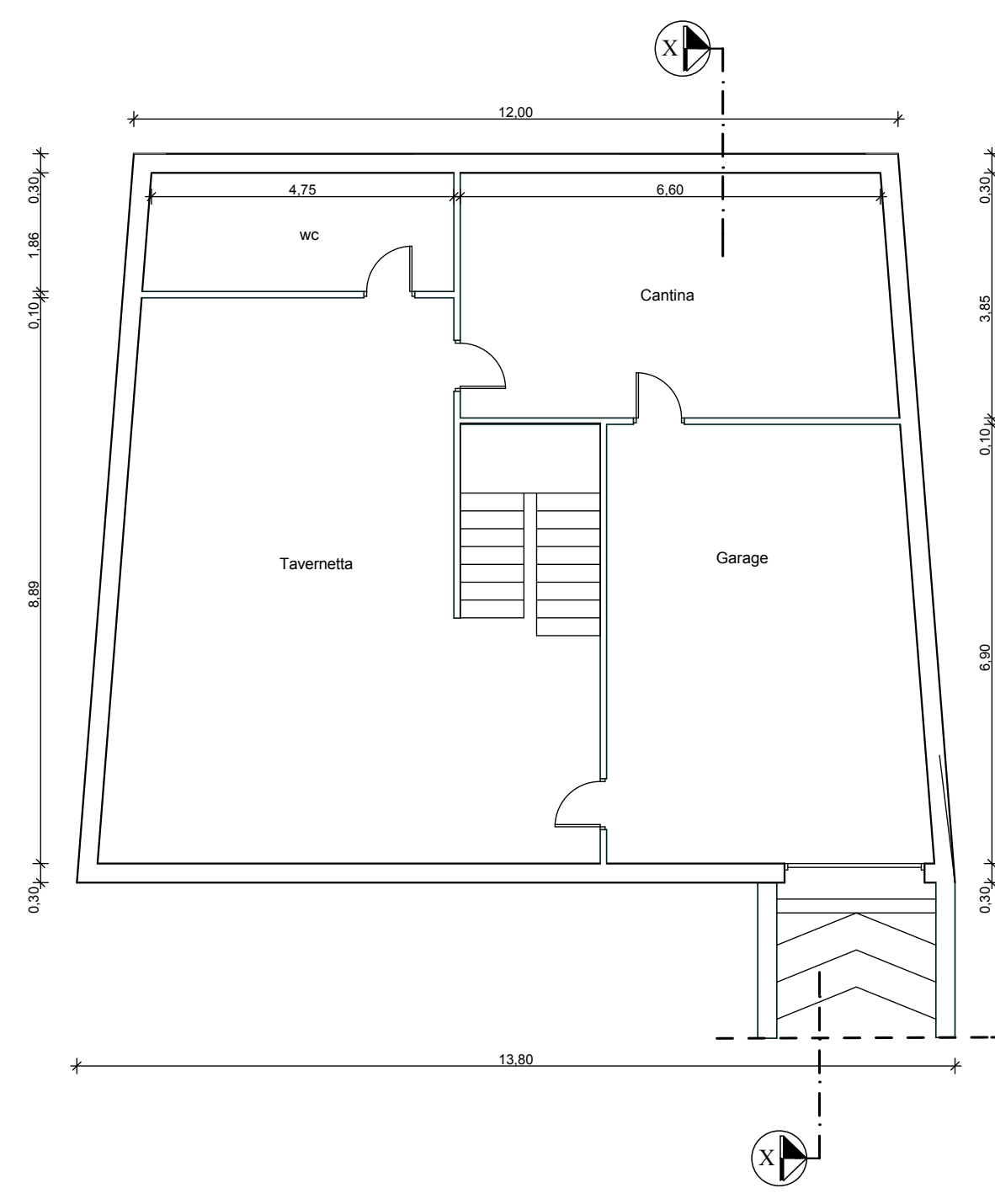


PROSPETTO POSTERIORE

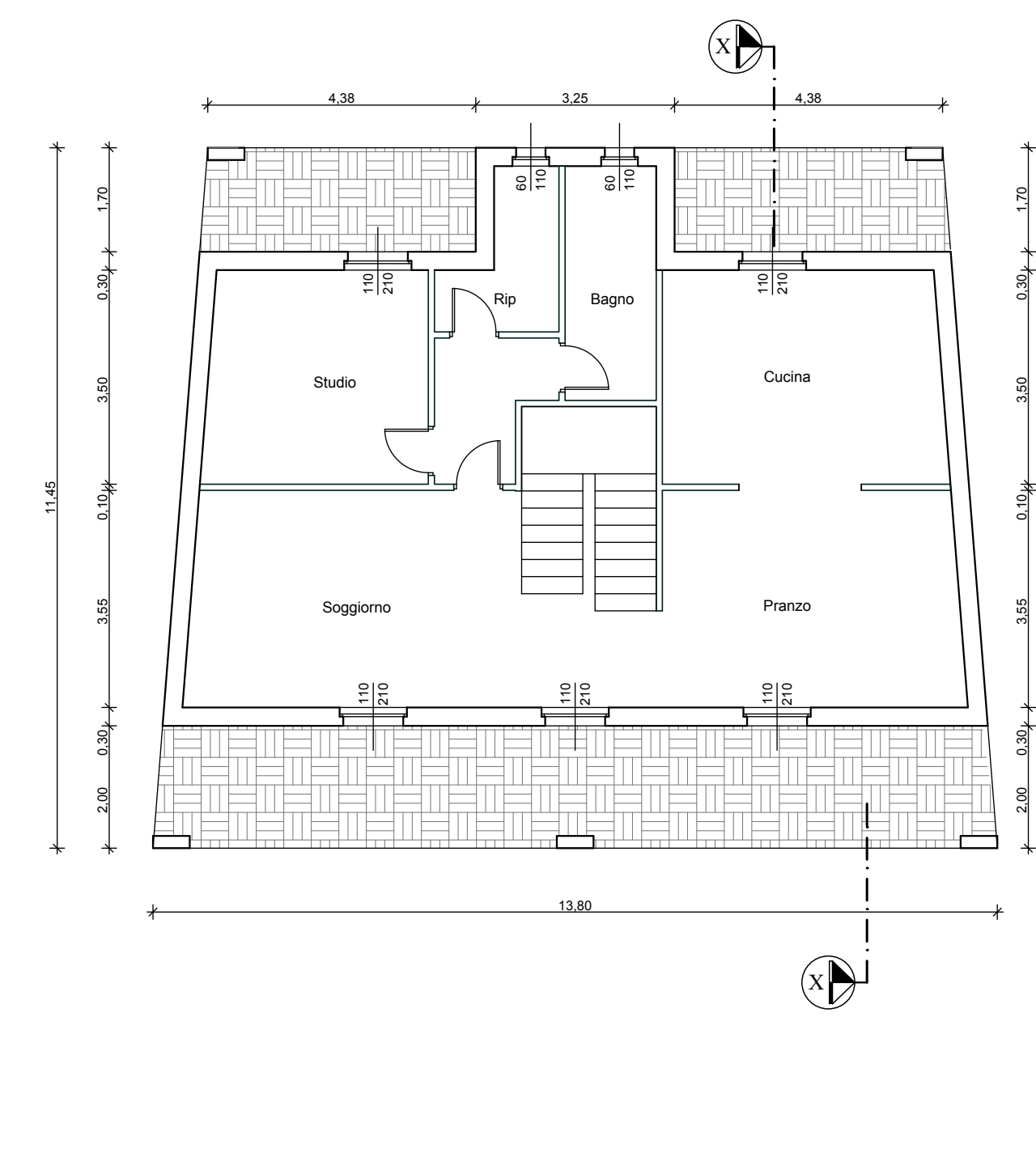


SEZIONE X-X

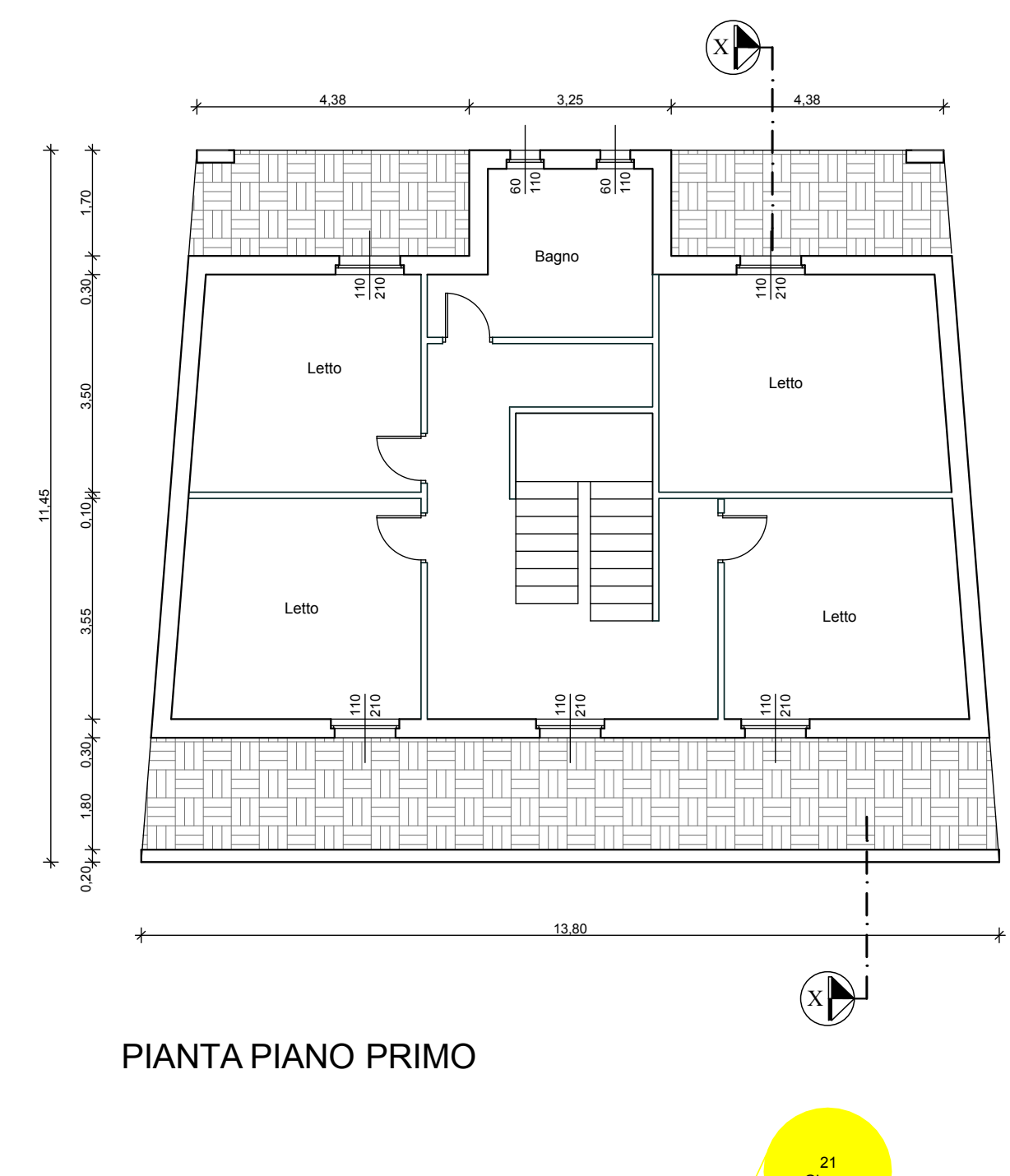
TIPOLOGIA EDILIZIA "E"



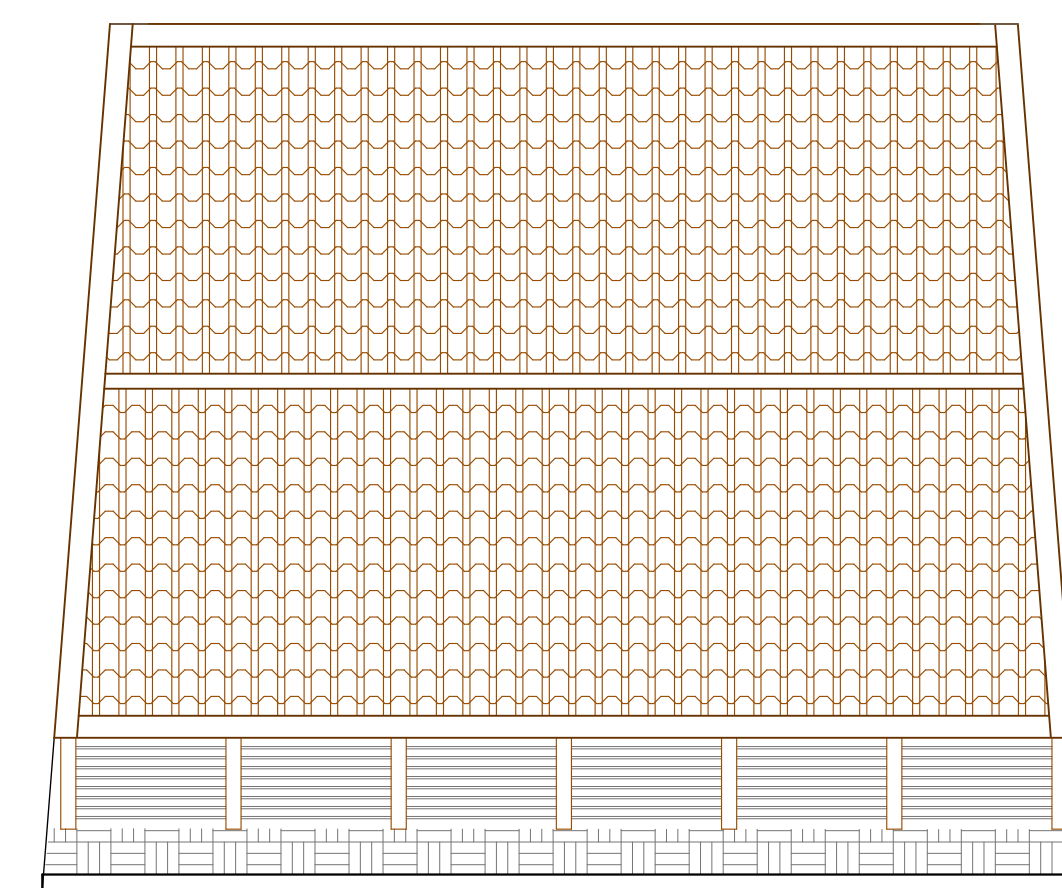
PIANTA PIANO INTERRATO Scala 1:100



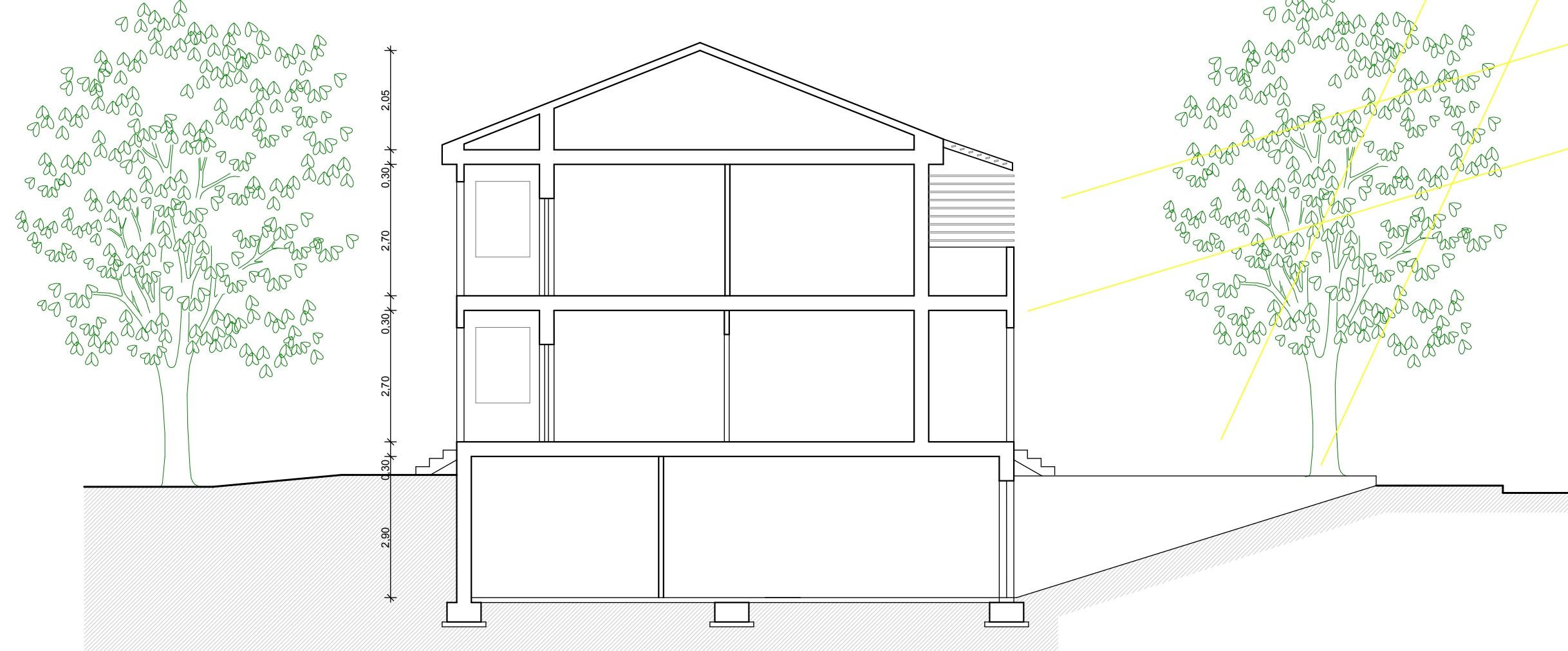
PIANTA PIANO TERRA Scala 1:100



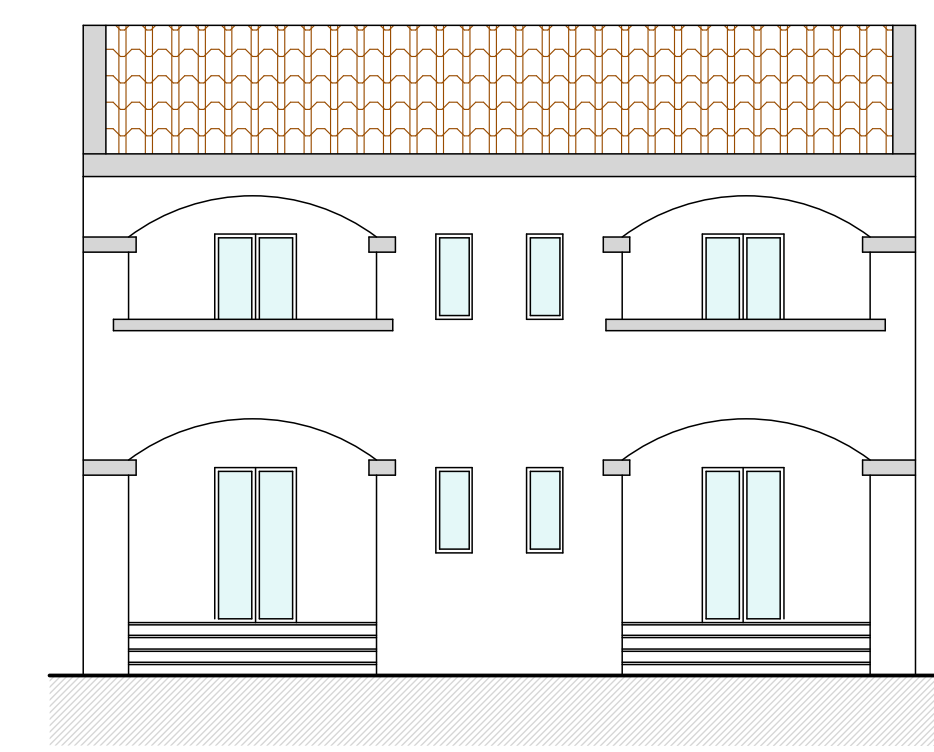
PIANTA PIANO PRIMO



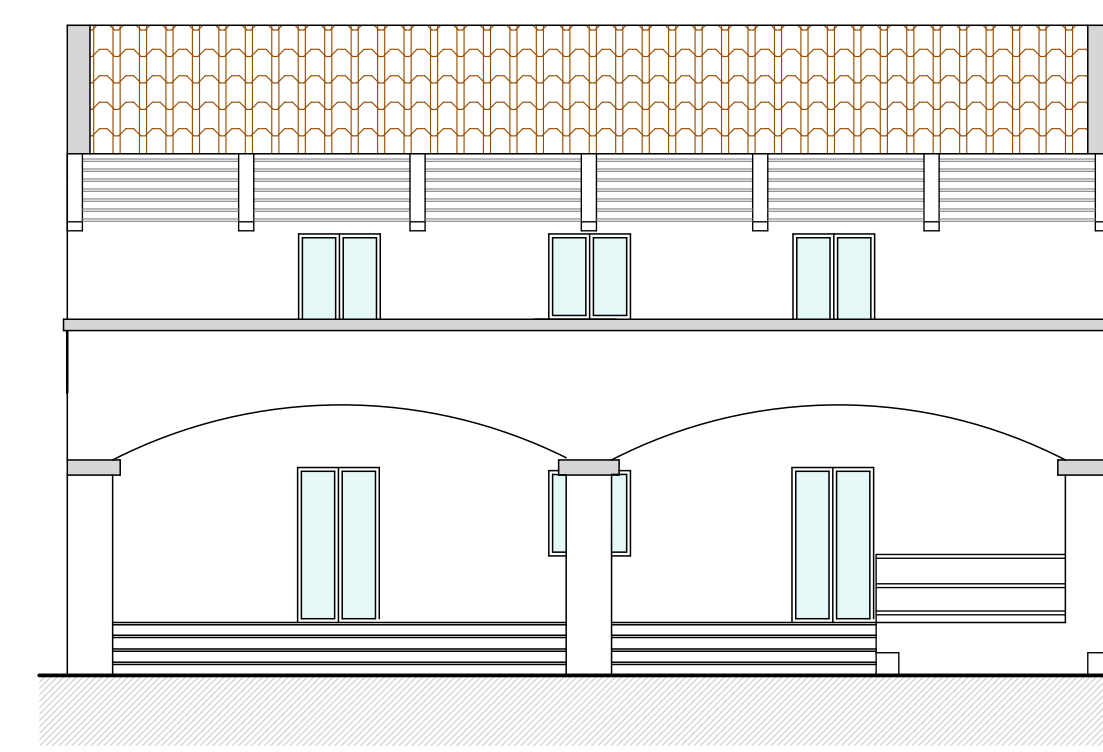
PIANTA COPERTURA



SEZIONE X-X



PROSPETTO POSTERIORE



PROSPETTO PRINCIPALE

COMUNE DI MONTALBANO JONICO

PROGETTO DI LOTTIZZAZIONE CONVENZIONATA
DI UN'AREA CLASSIFICATA, COME ZONA "C2"
NEL VIGENTE R.U.
DEL COMUNE DI MONTALBANO JONICO,
DA DESTINARE A EDILIZIA A SCHIERA

SCHEMA TIPOLOGIE EDILIZIE D - E				
Scala:	Revisione:	Data:	Code:	Collaboratore:
1:100	03	Feb. 2019		Gen. G. Galasso
	02	Nov. 2018		
	01	Apr. 2007	PR 16	
	00	Lug. 2006	PR 16	

16

Studio Tarsia - Servizi di Ingegneria
Piazza dei Centomila n.13
79020 Scanzano Jonico (MT)
Tel. 085/953148 - fax 1782.711028

e-mail: info@studiotarsia.it - pec: niccolina.tarsia@ingpec.it
www.studiotarsia.it - C.F. TRSNLNSH14L049Z - P.I. 00397460775